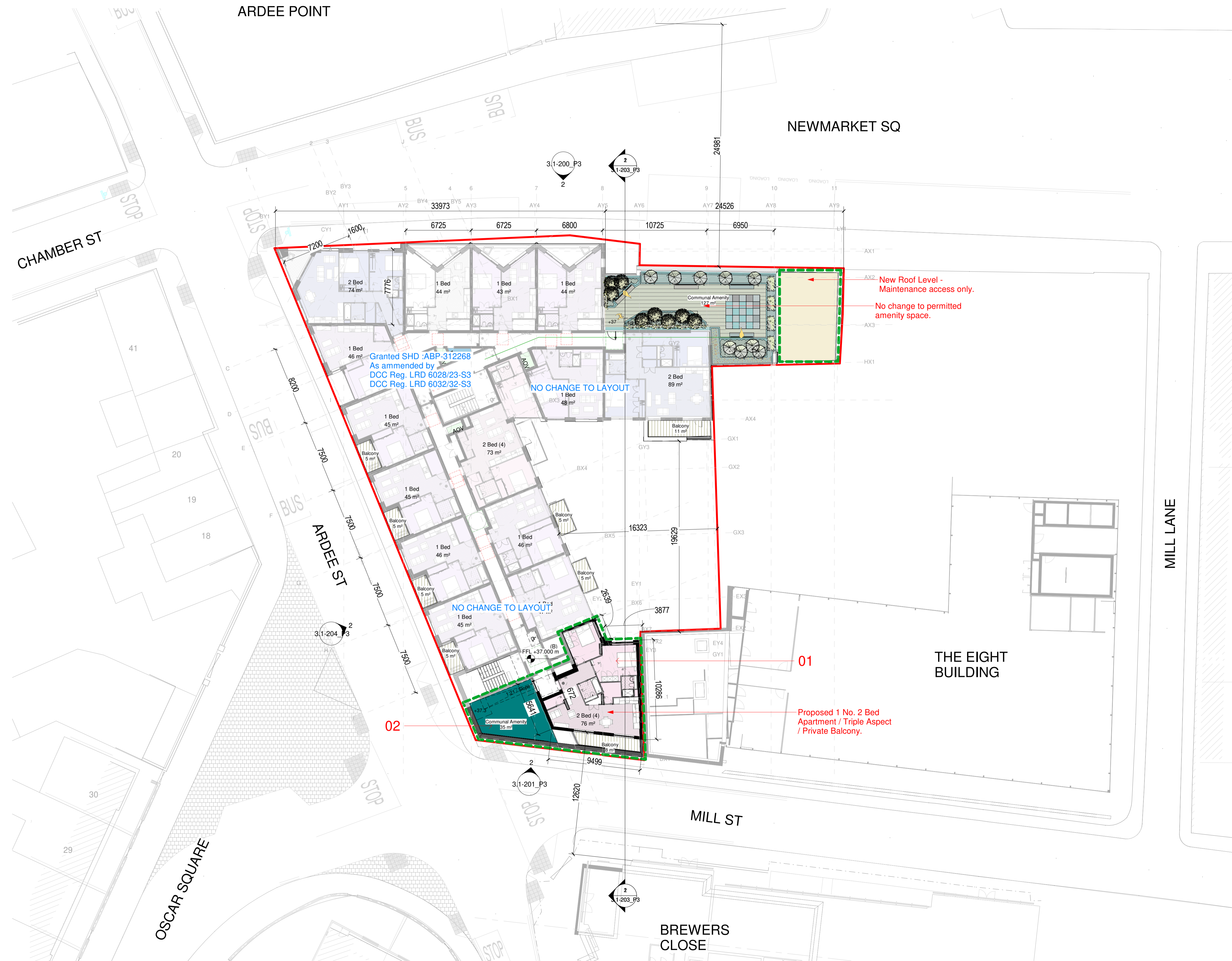
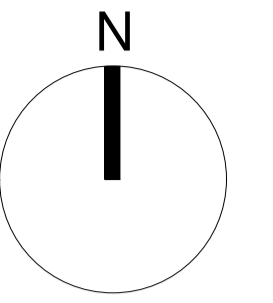


# PROPOSED



Notes:  
DO NOT SCALE FROM THIS DRAWING. USE FIGURED DIMENSIONS IN ALL CASES. VERIFY DIMENSIONS ON SITE AND REPORT ANY DISCREPANCIES TO THE ARCHITECTS IMMEDIATELY. THIS DRAWING IS TO BE READ IN CONJUNCTION WITH THE ARCHITECTS SPECIFICATION. © THIS DRAWING IS COPYRIGHT AND MAY ONLY BE REPRODUCED WITH THE ARCHITECTS PERMISSION.



## PLANNING LEGEND

- Site Boundary Line
- - - Proposed Amendments
- Studio
- 1 Bed
- 2 Bed
- 2 Bed (4)
- 3 Bed
- 2 Bed (3)
- Amenity
- Bicycle Parking
- Bikes
- Co-Working
- Core
- Commercial
- Energy Centre
- Games Room
- Foyer
- Plant
- Refuse
- Sub/Switch

- 1 - Proposed New 2 bed apartment to Mill St - see drawing 3.1\_400\_P3 - Proposed Apartment Types for more information
- 2 - Proposed Amended Amenity Landscaped area Refer to Landscaping drawings for more information.

P-02	19.08.24	EOB	ISSUED FOR PLANNING
P-01	29.07.24	EOB	ISSUED FOR PLANNING

Rev	Date	DRN	Description
-----	------	-----	-------------

Reddy Architecture + Urbanism  
Darryl Mills,  
Darryl Road,  
Dublin 6, D06 Y0E3.  
T: +353 (0)1 4887000  
W: www.reddyarchitecture.com  
E: info@reddyarchitecture.com

Client Details:  
NREK1 Limited

Project Details:  
Ardee Street  
18 Newmarket, Dublin 8

Drawing Title:  
Proposed 7th Floor Plan

Job No	Date	Scale@A1
P19-149D	19.08.24	1:200
Status	Drawn By:	BR
Planning	Checked By:	EOB
Purpose	Revision	

Drawing Number	Revision
P19-149D-3.1-107_P3	P-02